



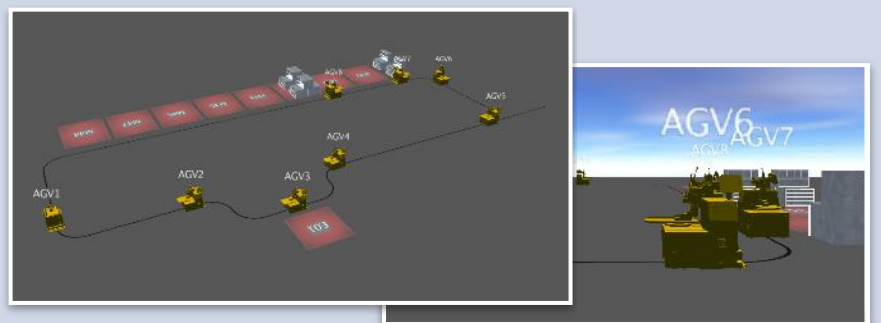
### Automatic cranes

- **binderholz** is a full-range supplier for glulam **wood products**. Its core competence lies in the production of straight as well as special shaped beams. Glulam consists of at least 3 timber lamellas glued parallel to the grain.
- ABF - Industrielle Automation prepares the detail specification for a warehouse management and control system for two automatic cranes operating on **cantilever racks** at the production site in Jenbach / Austria.
- Fully automatic storing of glulam wood products from 4 to 22 meter will be managed by *OneBase* – MFT.



### AGVs

- ABF supports **BRP Rotax**, in achieving **Industry 4.0** compliant engine assembly with lot size 1
- Control and coordination of automated guided vehicles (**AGV**)
- The 3D visualization was realized with *OneBase* - MFT



### Analysis

- With the all new **Event Logger 2.0**, *OneBase* - MFT provides now a perfect environment for analyzing your vehicle fleet
- Recording **empty runs**, speed limit violations, transport order durations, **material movements**, collision warnings, ...
- Offering a **central analysis** and reporting tool with a history playback in 3D



### Performance assistance system

- Finding the **fastest route** to the target product gets as easy as possible with the all new Situation Adaptive Routing Algorithm (**SARA**).
- Thereby *OneBase* - MFT improves the **navigation** performance in huge warehouses and decreases **environmental emissions** by reducing fuel consumptions and unnecessary ways.

